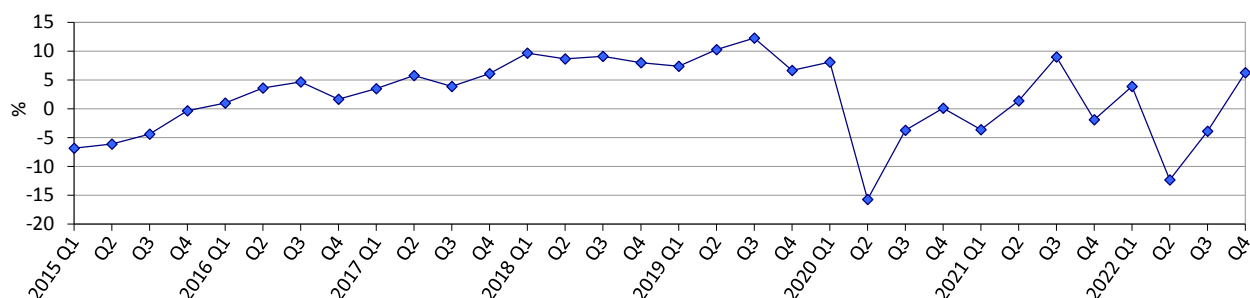
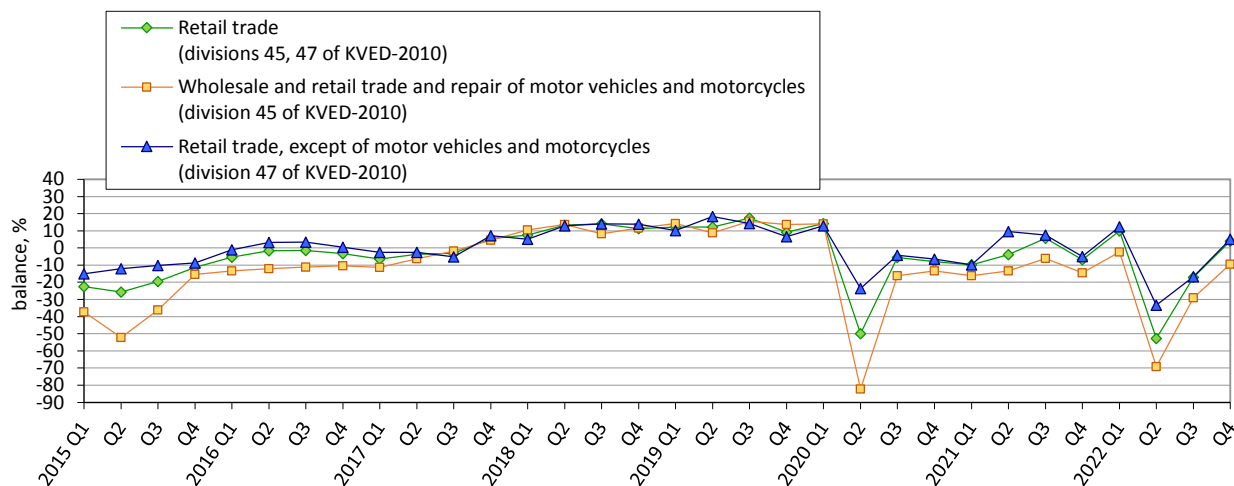


# Expectations of retail trade enterprises in IV quarter 2022 regarding the development of their business activity

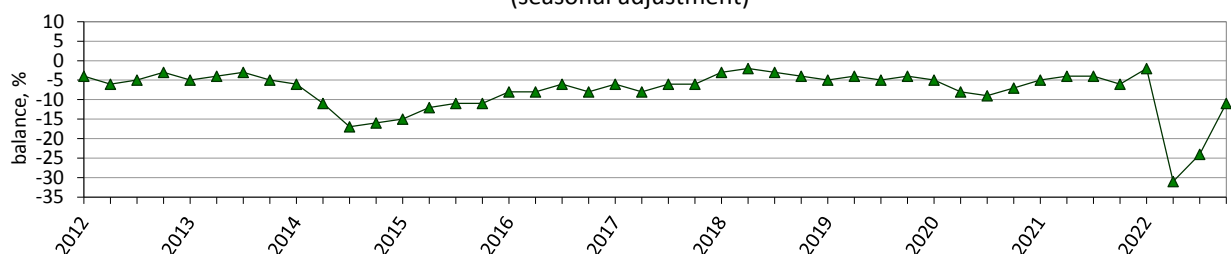
## Retail trade confidence indicator<sup>1</sup>



## Expected changes in sales (turnover) in retail trade (seasonal adjustment)



## Assessment of the current volume of stock of goods in retail trade (seasonal adjustment)

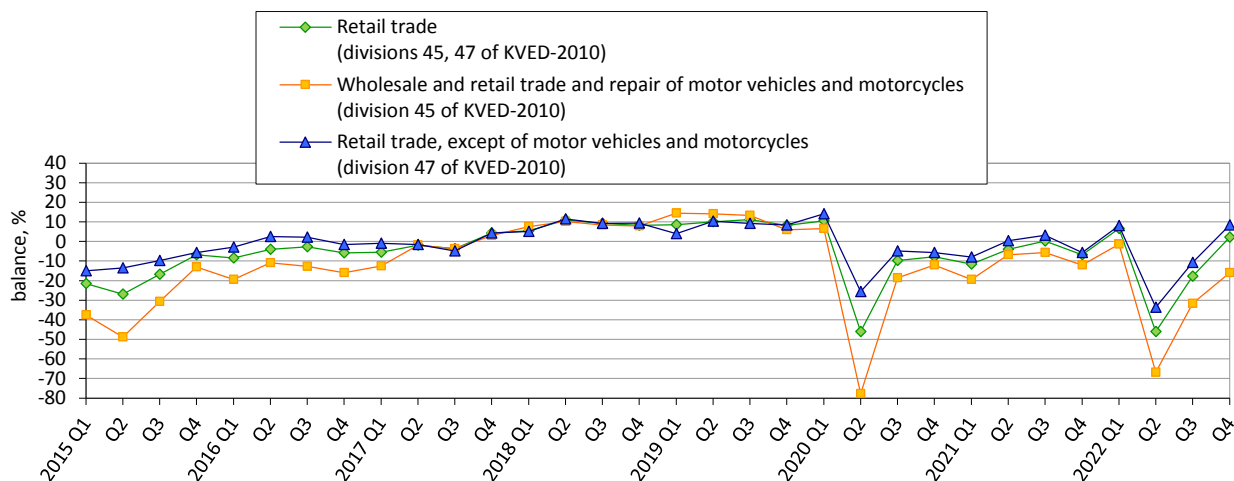


**Notes.** Data for 2014–2022 exclude the temporarily occupied territory of the Autonomous Republic of Crimea, the city of Sevastopol and a part of temporarily occupied territories in the Donetsk and Luhansk regions.

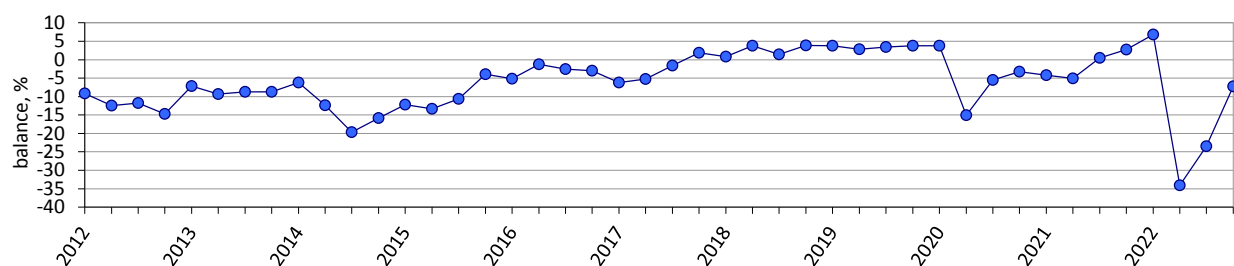
The information for II–IV quarters of 2022 is formed on the basis of data reports of enterprises, which were submitted on initiative.

<sup>1</sup> The indicator is calculated by the method of calculation of indicators of business expectations, approved by order of the SSSU of 03 December, 2021 No 301.

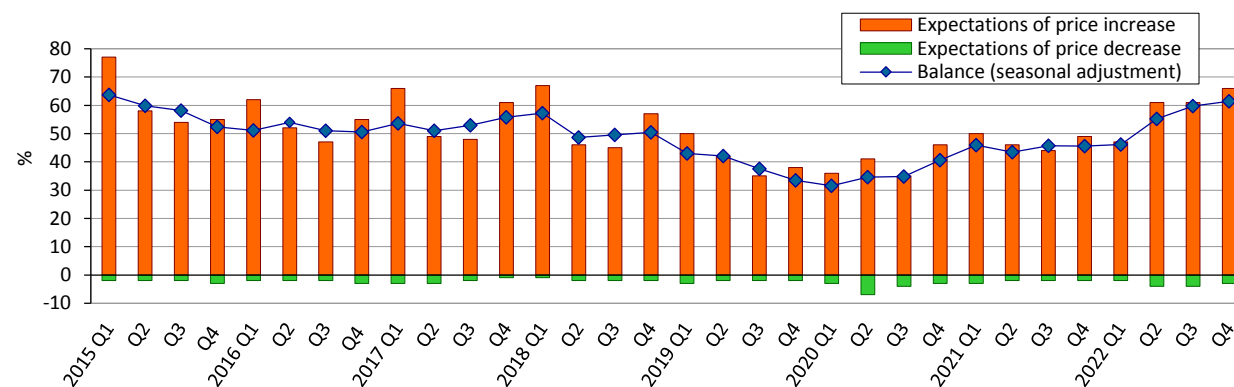
### Expected changes in orders placed with suppliers (seasonal adjustment)



### Expected changes in employment at retail trade enterprises (seasonal adjustment)



### Expected changes in prices of goods in retail trade



**Results of the survey of retail trade enterprises  
in October 2022**

(per cent of the total number of surveyed enterprises)

|   |  |                                |  |                                |                       |         |  |
|---|--|--------------------------------|--|--------------------------------|-----------------------|---------|--|
| <i>Retail trade<br/>(divisions 45, 47 of<br/>KVED-2010)</i> | <i>Results of the survey of 361 enterprises</i>                        |                                |  |                                |                       |         |  |
|   | <b>How did change sales<br/>(turnover) in<br/>July–September 2022</b>  | increased                      | remain<br>unchanged                    | decreased                      | no<br>response        | balance | <i>change of<br/>balance over<br/>III quarter<br/>2022, pp</i> |
|   |  | 49                             | 24                                     | 27                             | 0                     | 22      | 46   |
|   |  |                                |  |                                |                       |         |  |
|   | <b>How do you assess current<br/>the volume of stock of goods</b>      | too large<br>(above<br>normal) | adequate<br>(normal for<br>the season) | too small<br>(below<br>normal) | no stocks<br>of goods | balance | <i>change of<br/>balance over<br/>III quarter<br/>2022, pp</i> |
|   |  | 2                              | 82                                     | 13                             | 3                     | -11     | 13   |
|   |  |                                |  |                                |                       |         |  |
|   | <b>How do you expect to<br/>change over<br/>October–December 2022:</b> | increase                       | remain<br>unchanged                    | decrease                       | no<br>response        | balance | <i>change of<br/>balance over<br/>III quarter<br/>2022, pp</i> |
|   |  |                                |  |                                |                       |         |  |
|   | orders placed with suppliers   | 34                             | 39                                     | 27                             | 0                     | 7       | 18   |
|   | sales (turnover)   | 39                             | 33                                     | 28                             | 0                     | 11      | 21   |
|   | employment   | 11                             | 71                                     | 18                             | 0                     | -7      | 16   |
|   | prices of goods  | 66                             | 31                                     | 3                              | 0                     | 63      | 6  |

|   |  |                                |  |                                |                       |         |  |
|---|--|--------------------------------|--|--------------------------------|-----------------------|---------|--|
| <i>Wholesale and<br/>retail trade and<br/>repair of motor<br/>vehicles and<br/>motorcycles<br/>(division 45 of<br/>KVED-2010)</i> | <i>Results of the survey of 115 enterprises</i>                        |                                |  |                                |                       |         |  |
|   | <b>How did change sales<br/>(turnover) in<br/>July–September 2022</b>  | increased                      | remain<br>unchanged                    | decreased                      | no<br>response        | balance | <i>change of<br/>balance over<br/>III quarter<br/>2022, pp</i> |
|   |  | 47                             | 24                                     | 29                             | 0                     | 18      | 41   |
|   |  |                                |  |                                |                       |         |  |
|   | <b>How do you assess current<br/>the volume of stock of goods</b>      | too large<br>(above<br>normal) | adequate<br>(normal for<br>the season) | too small<br>(below<br>normal) | no stocks<br>of goods | balance | <i>change of<br/>balance over<br/>III quarter<br/>2022, pp</i> |
|   |  | 3                              | 74                                     | 21                             | 2                     | -18     | 11   |
|   |  |                                |  |                                |                       |         |  |
|   | <b>How do you expect to<br/>change over<br/>October–December 2022:</b> | increase                       | remain<br>unchanged                    | decrease                       | no<br>response        | balance | <i>change of<br/>balance over<br/>III quarter<br/>2022, pp</i> |
|   |  |                                |  |                                |                       |         |  |
|   | orders placed with suppliers   | 18                             | 45                                     | 37                             | 0                     | -19     | 4  |
|   | sales (turnover)   | 23                             | 41                                     | 36                             | 0                     | -13     | 6  |
|   | employment   | 3                              | 74                                     | 23                             | 0                     | -20     | 12   |
|   | prices of goods  | 59                             | 39                                     | 2                              | 0                     | 57      | 2  |

|   |   |                                |  |                                |                       |         |  |
|---|---|--------------------------------|--|--------------------------------|-----------------------|---------|--|
| Retail trade, except<br>of motor vehicles<br>and motorcycles<br>(division 47 of<br>KVED-2010) | Results of the survey of 246 enterprises                      |                                |  |                                |                       |         |  |
|   | How did change sales<br>(turnover) in<br>July–September 2022  | increased                      | remain<br>unchanged                    | decreased                      | no<br>response        | balance | change of<br>balance over<br>III quarter<br>2022, pp |
|   |   | 50                             | 24                                     | 26                             | 0                     | 24      | 48   |
|   |   |                                |  |                                |                       |         |  |
|   | How do you assess current<br>the volume of stock of goods     | too large<br>(above<br>normal) | adequate<br>(normal for<br>the season) | too small<br>(below<br>normal) | no stocks<br>of goods | balance | change of<br>balance over<br>III quarter<br>2022, pp |
|   |   | 1                              | 86                                     | 10                             | 3                     | -9      | 13   |
|   |   |                                |  |                                |                       |         |  |
|   | How do you expect to<br>change over<br>October–December 2022: | increase                       | remain<br>unchanged                    | decrease                       | no<br>response        | balance | change of<br>balance over<br>III quarter<br>2022, pp |
|   |   | orders placed with suppliers   | 41                                     | 37                             | 22                    | 0       | 19   |
|   | sales (turnover)  | 46                             | 30                                     | 24                             | 0                     | 22      | 28   |
| employment  | 15  | 70                             | 15                                     | 0                              | 0                     | 18      |  |
| prices of goods   | 69  | 27                             | 4                                      | 0                              | 65                    | 7       |  |