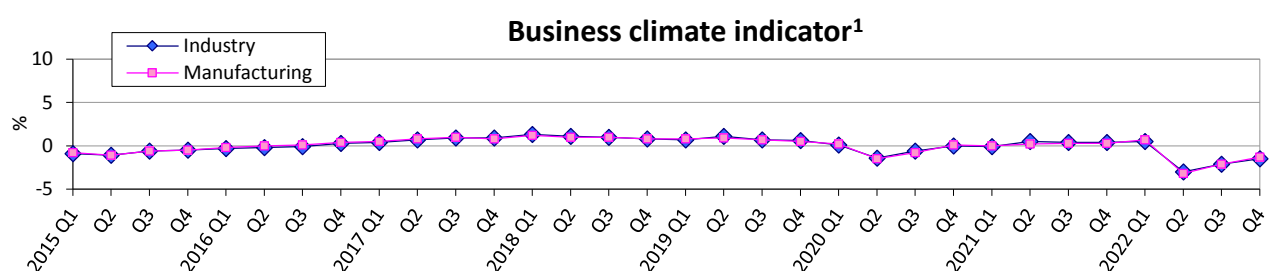
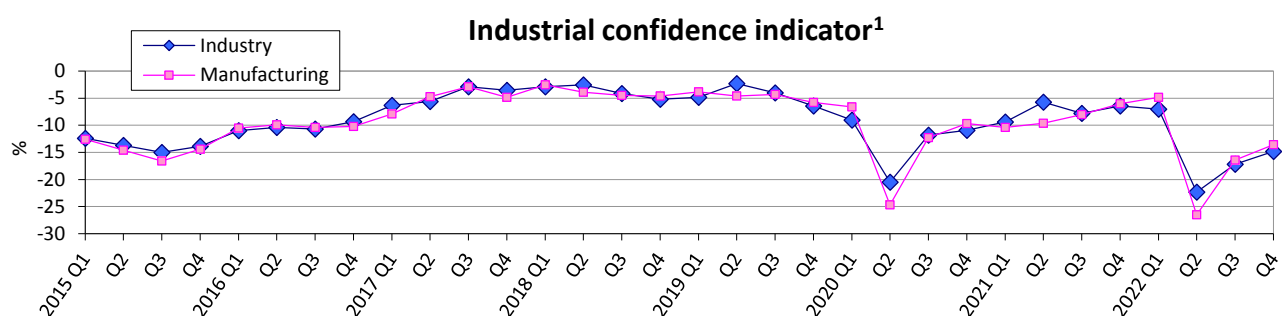
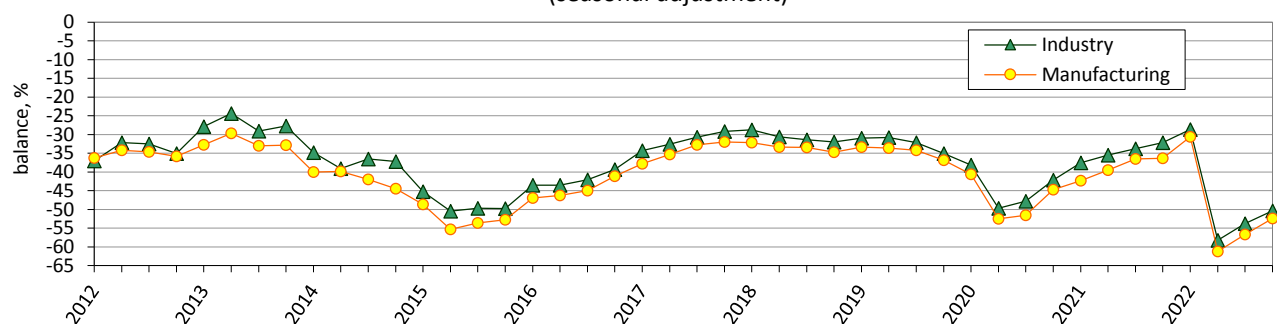


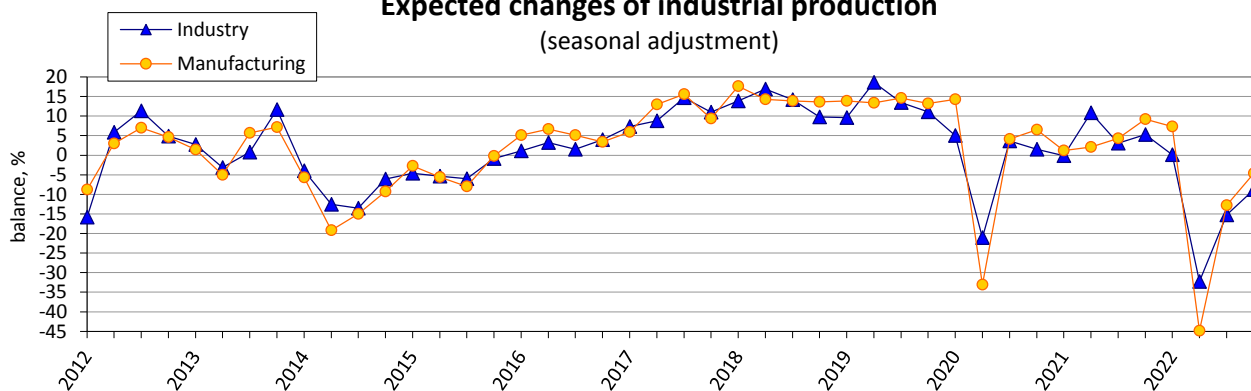
Expectations of industrial enterprises in IV quarter 2022 regarding the development of their business activity



Assessment of current order-books (demand) on the industrial production (seasonal adjustment)



Expected changes of industrial production (seasonal adjustment)

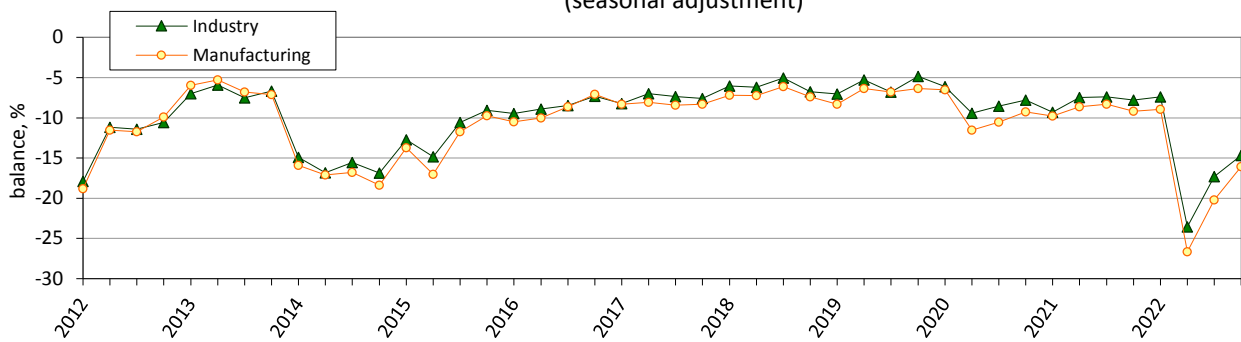


Notes. Data for 2014-2022 exclude the temporarily occupied territory of the Autonomous Republic of Crimea, the city of Sevastopol and a part of temporarily occupied territories in the Donetsk and Luhansk regions.

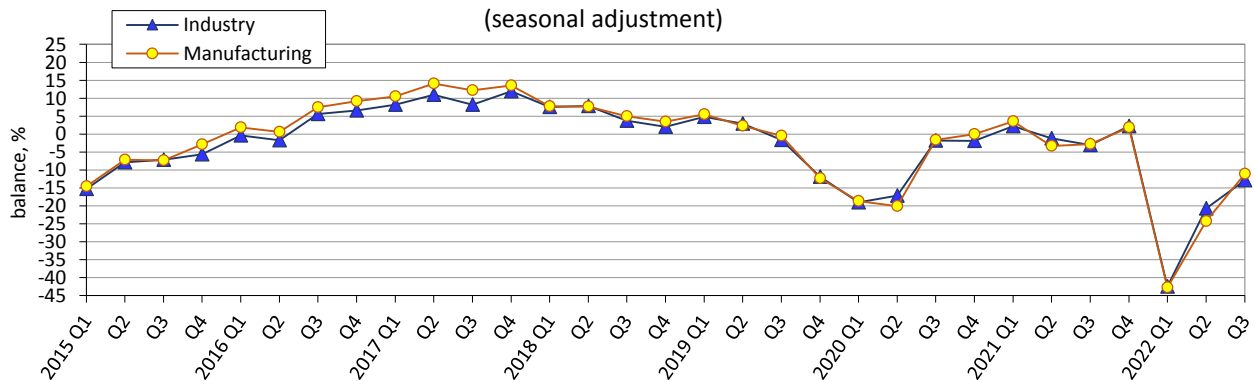
The information for II–IV quarters of 2022 is formed on the basis of data reports of enterprises, which were submitted on initiative.

¹ The indicator is calculated by the method of calculation of indicators of business expectations, approved by order of the SSSU of 03 December, 2021 No 301.

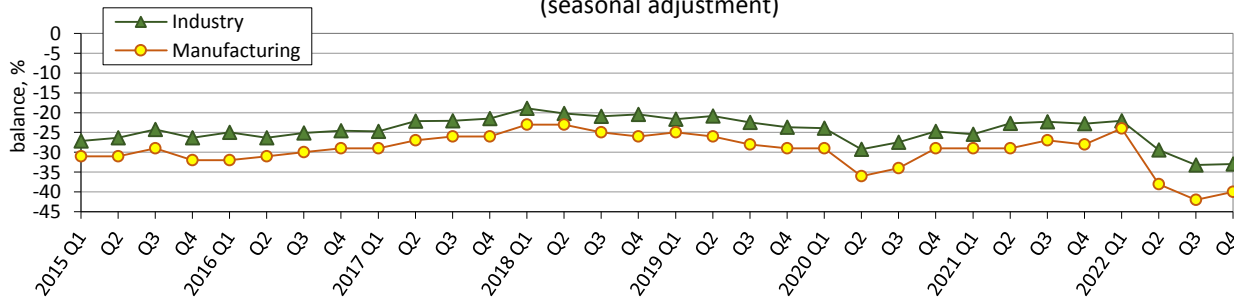
Assessment of current stock of finished products in industry (seasonal adjustment)



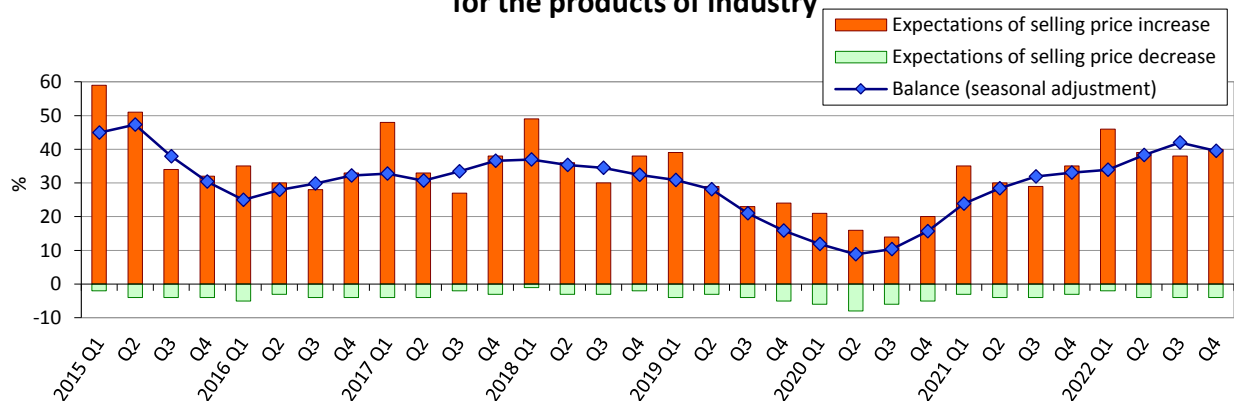
Assessment of industrial production in the past 3 months (seasonal adjustment)



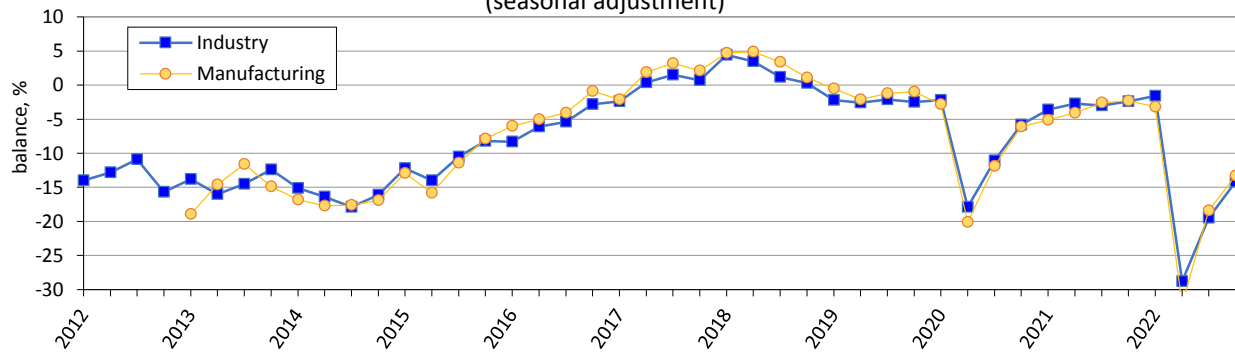
Assessment of current export order-books (export demand) on the industrial production (seasonal adjustment)



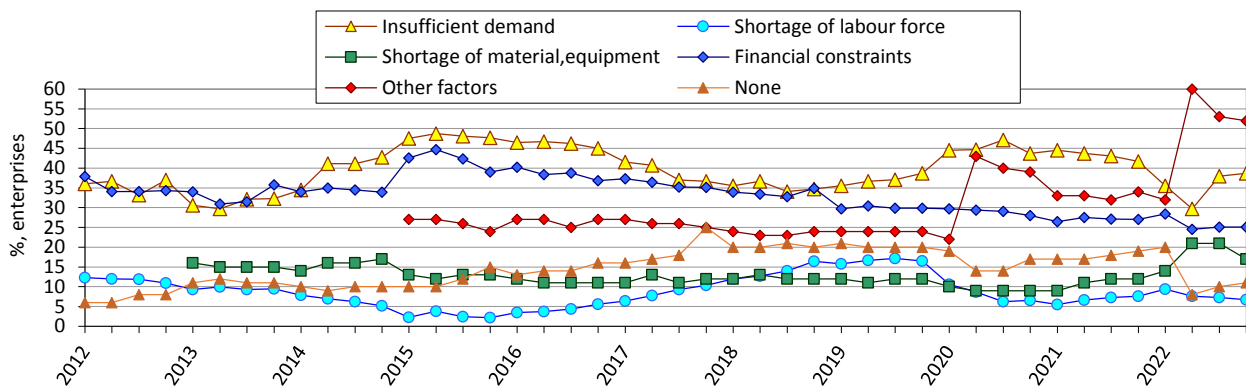
Expected changes in selling prices for the products of industry



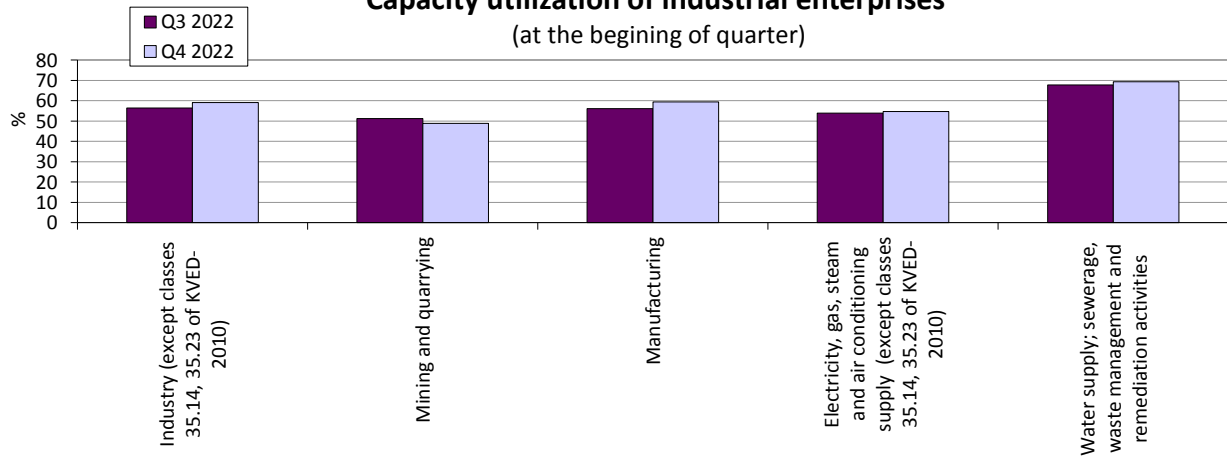
Expected changes in employment at industrial enterprises (seasonal adjustment)



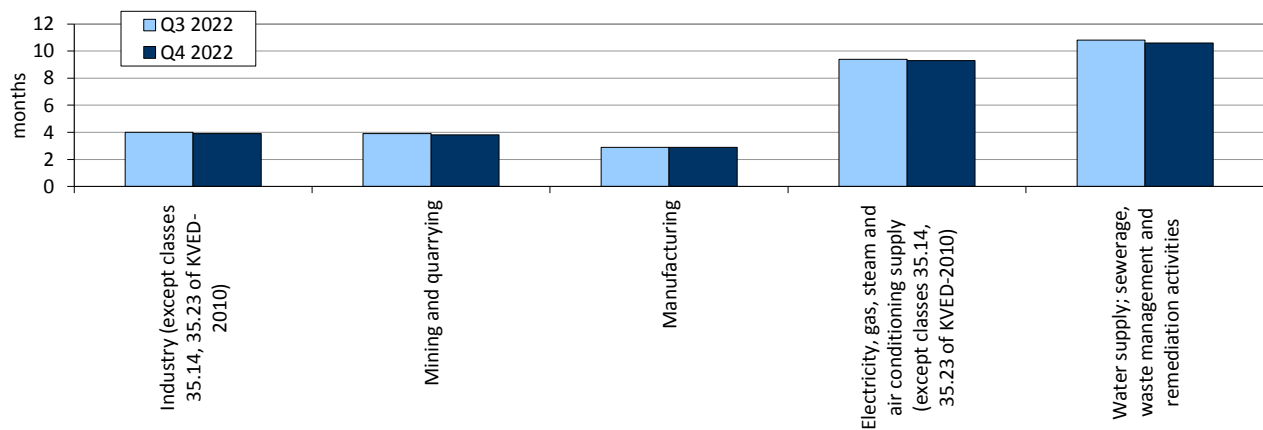
Factors limiting production (seasonal adjustment)



Capacity utilization of industrial enterprises (at the beginning of quarter)



Availability of orders to industrial enterprises



Results of the survey of industry enterprises in October 2022

(per cent of the total number of surveyed enterprises)

| Industry (sections B-E except classes 35.14, 35.23 of KVED-2010) | Results of the survey of 968 enterprises | | | | | | |
|--|--|--|--|--|-----------------------------------|---------|--|
| | How did change in July–September 2022: | increased | remain unchanged | decreased | no response | balance | change of balance over III quarter 2022, pp |
| | production | 26 | 42 | 32 | 0 | -6 | 16 |
| | total order-books (demand) | 24 | 45 | 31 | 0 | -7 | 19 |
| | How do you assess your current overall order-books (demand) | more than sufficient (above normal) | sufficient (normal for the season) | not sufficient (below normal) | no response | balance | change of balance over III quarter 2022, pp |
| | | 2 | 47 | 51 | 0 | -49 | 6 |
| | How do you assess your current export order-books (export demand) | more than sufficient (above normal) | sufficient (normal for the season) | not sufficient (below normal) | no export | balance | change of balance over III quarter 2022, pp |
| | | 1 | 21 | 34 | 44 | -33 | 1 |
| | How do you assess your current stocks of finished products | too large (above normal) | adequate (normal for the season) | too small (below normal) | no stocks of finished goods | balance | change of balance over III quarter 2022, pp |
| | | 4 | 51 | 19 | 26 | -15 | 3 |
| | How do you expect to change over October–December 2022: | increase | remain unchanged | decrease | no response | balance | change of balance over III quarter 2022, pp |
| | production | 23 | 47 | 30 | 0 | -7 | 3 |
| | selling prices for the products | 40 | 56 | 4 | 0 | 36 | 2 |
| | employment | 8 | 70 | 22 | 0 | -14 | 3 |
| | How do you expect to change export orders (export demand) over October–December 2022 | increase | remain unchanged | decrease | no export | balance | change of balance over III quarter 2022, pp |
| | | 6 | 35 | 14 | 45 | -8 | 1 |
| | How do you assess your current production capacity, considering your current order books and the expected change in demand over October–December 2022 | more than sufficient | sufficient | not sufficient | no response | balance | change of balance over III quarter 2022, pp |
| | | 14 | 70 | 15 | 1 | -1 | -2 |

| Industry (sections B-E except classes 35.14, 35.23 of KVED-2010) | How did change competitive position on the domestic market in July–September 2022 | improved | remained unchanged | deterio- rated | no response | balance | change of balance over III quarter 2022, pp |
|--|--|----------|-----------------------|-------------------|-------------|---------|--|
| | | 5 | 81 | 13 | 1 | -8 | 3 |
| | How did change competitive position on foreign markets in July–September 2022: | improved | remained unchanged | deterio- rated | no export | balance | change of balance over III quarter 2022, pp |
| | inside the EU | 2 | 42 | 10 | 46 | -8 | 2 |
| | outside the EU | 1 | 42 | 10 | 47 | -9 | 2 |

| Mining and quarrying (section B of KVED-2010) | Results of the survey of 54 enterprises | | | | | | |
|--|---|--|--|--|-----------------------------------|---------|--|
| | How did change in July–September 2022: | increased | remain unchanged | decreased | no response | balance | change of balance over III quarter 2022, pp |
| | production | 11 | 37 | 52 | 0 | -41 | -5 |
| | total order-books (demand) | 8 | 48 | 44 | 0 | -36 | 7 |
| | How do you assess your current overall order-books (demand) | more than sufficient (above normal) | sufficient (normal for the season) | not sufficient (below normal) | no response | balance | change of balance over III quarter 2022, pp |
| | | 4 | 24 | 72 | 0 | -68 | 1 |
| | How do you assess your current export order-books (export demand) | more than sufficient (above normal) | sufficient (normal for the season) | not sufficient (below normal) | no export | balance | change of balance over III quarter 2022, pp |
| | | 0 | 4 | 22 | 74 | -22 | -9 |
| | How do you assess your current stocks of finished products | too large (above normal) | adequate (normal for the season) | too small (below normal) | no stocks of finished goods | balance | change of balance over III quarter 2022, pp |
| | | 6 | 40 | 28 | 26 | -22 | 5 |
| | How do you expect to change over October–December 2022: | increase | remain unchanged | decrease | no response | balance | change of balance over III quarter 2022, pp |
| | production | 19 | 35 | 46 | 0 | -27 | -5 |
| | selling prices for the products | 20 | 72 | 8 | 0 | 12 | -9 |
| | employment | 4 | 55 | 41 | 0 | -37 | -10 |
| | How do you expect to change export orders (export demand) over October–December 2022 | increase | remain unchanged | decrease | no export | balance | change of balance over III quarter 2022, pp |
| | | 6 | 7 | 13 | 74 | -7 | -4 |

Continued

| | | | | | | | |
|--|---|----------------------|--------------------|----------------|-------------|---------|---|
| Mining and quarrying (section B of KVED-2010) | How do you assess your current production capacity, considering your current order books and the expected change in demand over October–December 2022 | more than sufficient | sufficient | not sufficient | no response | balance | change of balance over III quarter 2022, pp |
| | | 13 | 56 | 31 | 0 | -18 | 3 |
| | | | | | | | |
| | How did change competitive position on the domestic market in July–September 2022 | improved | remained unchanged | deterio-rated | no response | balance | change of balance over III quarter 2022, pp |
| | | 0 | 74 | 26 | 0 | -26 | 8 |
| | | | | | | | |
| | How did change competitive position on foreign markets in July–September 2022: | improved | remained unchanged | deterio-rated | no export | balance | change of balance over III quarter 2022, pp |
| | | inside the EU | 0 | 26 | 4 | 70 | -4 |
| | outside the EU | 0 | 22 | 4 | 74 | -4 | 1 |

| | | | | | | | |
|--|---|--|--|--|-----------------------------------|---------|--|
| Manufacturing (section C of KVED-2010) | Results of the survey of 780 enterprises | | | | | | |
| | How did change in July–September 2022: | increased | remain unchanged | decreased | no response | balance | change of balance over III quarter 2022, pp |
| | production | 29 | 38 | 33 | 0 | -4 | 16 |
| | total order-books (demand) | 26 | 41 | 33 | 0 | -7 | 17 |
| | | | | | | | |
| | How do you assess your current overall order-books (demand) | more than sufficient (above normal) | sufficient (normal for the season) | not sufficient (below normal) | no response | balance | change of balance over III quarter 2022, pp |
| | | 2 | 44 | 54 | 0 | -52 | 6 |
| | | | | | | | |
| | How do you assess your current export order-books (export demand) | more than sufficient (above normal) | sufficient (normal for the season) | not sufficient (below normal) | no export | balance | change of balance over III quarter 2022, pp |
| | | 1 | 25 | 41 | 33 | -40 | 2 |
| | | | | | | | |
| | How do you assess your current stocks of finished products | too large (above normal) | adequate (normal for the season) | too small (below normal) | no stocks of finished goods | balance | change of balance over III quarter 2022, pp |
| | | 5 | 57 | 22 | 16 | -17 | 4 |
| | | | | | | | |
| | How do you expect to change over October–December 2022: | increase | remain unchanged | decrease | no response | balance | change of balance over III quarter 2022, pp |
| | production | 20 | 49 | 31 | 0 | -11 | -4 |
| | selling prices for the products | 46 | 50 | 4 | 0 | 42 | 3 |
| | employment | 7 | 70 | 23 | 0 | -16 | 2 |

Continued

| | | | | | | | |
|--|--|-------------------------|-----------------------|-------------------|-------------|---------|--|
| Manufacturing (section C of KVED-2010) | How do you expect to change export orders (export demand) over October–December 2022 | increase | remain unchanged | decrease | no export | balance | change of balance over III quarter 2022, pp |
| | | 8 | 43 | 16 | 33 | -8 | 2 |
| | | | | | | | |
| | How do you assess your current production capacity, considering your current order books and the expected change in demand over October–December 2022 | more than sufficient | sufficient | not sufficient | no response | balance | change of balance over III quarter 2022, pp |
| | | 15 | 70 | 14 | 1 | 1 | -1 |
| | | | | | | | |
| | How did change competitive position on the domestic market in July–September 2022 | improved | remained unchanged | deterio- rated | no response | balance | change of balance over III quarter 2022, pp |
| | | 6 | 80 | 13 | 1 | -7 | 3 |
| | | | | | | | |
| | How did change competitive position on foreign markets in July–September 2022: | improved | remained unchanged | deterio- rated | no export | balance | change of balance over III quarter 2022, pp |
| | | inside the EU | 3 | 49 | 12 | 36 | -9 |
| | outside the EU | 2 | 49 | 12 | 37 | -10 | 5 |

| | | | | | | | | |
|---|---|--|--|--|-----------------------------------|---------|--|----|
| Electricity, gas, steam and air conditioning supply (section D, except classes 35.14, 35.23 of KVED- 2010) | Results of the survey of 82 enterprises | | | | | | | |
| | How did change in July–September 2022: | increased | remain unchanged | decreased | no response | balance | change of balance over III quarter 2022, pp | |
| | | production | 15 | 65 | 19 | 1 | -4 | 47 |
| | | total order-books (demand) | 16 | 66 | 17 | 1 | -1 | 47 |
| | | | | | | | | |
| | How do you assess your current overall order-books (demand) | more than sufficient (above normal) | sufficient (normal for the season) | not sufficient (below normal) | no response | balance | change of balance over III quarter 2022, pp | |
| | | 1 | 70 | 28 | 1 | -27 | 7 | |
| | | | | | | | | |
| | How do you assess your current export order-books (export demand) | more than sufficient (above normal) | sufficient (normal for the season) | not sufficient (below normal) | no export | balance | change of balance over III quarter 2022, pp | |
| | | 0 | 5 | 0 | 95 | 0 | 0 | |
| | | | | | | | | |
| | How do you assess your current stocks of finished products | too large (above normal) | adequate (normal for the season) | too small (below normal) | no stocks of finished goods | balance | change of balance over III quarter 2022, pp | |
| | | 0 | 10 | 2 | 88 | -2 | -1 | |

Continued

| | | | | | | | |
|--|--|----------------------|--------------------|----------------|-------------|---------|--|
| <i>Electricity, gas, steam and air conditioning supply (section D, except classes 35.14, 35.23 of KVED-2010)</i> | How do you expect to change over October–December 2022: | increase | remain unchanged | decrease | no response | balance | <i>change of balance over III quarter 2022, pp</i> |
| | production | 62 | 28 | 9 | 1 | 53 | 73 |
| | selling prices for the products | 12 | 86 | 1 | 1 | 11 | 5 |
| | employment | 26 | 67 | 6 | 1 | 20 | 29 |
| | How do you expect to change export orders (export demand) over October–December 2022 | increase | remain unchanged | decrease | no export | balance | <i>change of balance over III quarter 2022, pp</i> |
| | | 0 | 1 | 0 | 99 | 0 | 0 |
| | How do you assess your current production capacity, considering your current order books and the expected change in demand over October–December 2022 | more than sufficient | sufficient | not sufficient | no response | balance | <i>change of balance over III quarter 2022, pp</i> |
| | | 11 | 77 | 11 | 1 | 0 | -3 |
| | How did change competitive position on the domestic market in July–September 2022 | improved | remained unchanged | deteriorated | no response | balance | <i>change of balance over III quarter 2022, pp</i> |
| | | 1 | 96 | 2 | 1 | -1 | 4 |
| | How did change competitive position on foreign markets in July–September 2022: | improved | remained unchanged | deteriorated | no export | balance | <i>change of balance over III quarter 2022, pp</i> |
| | inside the EU | 0 | 6 | 0 | 94 | 0 | 0 |
| | outside the EU | 0 | 6 | 0 | 94 | 0 | 0 |

| | | | | | | | |
|---|--|-------------------------------------|------------------------------------|-------------------------------|-------------|---------|--|
| <i>Water supply, sewerage, waste management and remediation activities (section E of KVED-2010)</i> | <i>Results of the survey of 52 enterprises</i> | | | | | | |
| | How did change in July–September 2022: | increased | remain unchanged | decreased | no response | balance | <i>change of balance over III quarter 2022, pp</i> |
| | production | 12 | 75 | 13 | 0 | -1 | 8 |
| | total order-books (demand) | 13 | 75 | 12 | 0 | 1 | 6 |
| | How do you assess your current overall order-books (demand) | more than sufficient (above normal) | sufficient (normal for the season) | not sufficient (below normal) | no response | balance | <i>change of balance over III quarter 2022, pp</i> |
| | | 0 | 69 | 31 | 0 | -31 | 4 |
| | How do you assess your current export order-books (export demand) | more than sufficient (above normal) | sufficient (normal for the season) | not sufficient (below normal) | no export | balance | <i>change of balance over III quarter 2022, pp</i> |
| | | 0 | 2 | 0 | 98 | 0 | 0 |

| | | | | | | | |
|---|--|--------------------------|----------------------------------|--------------------------|-----------------------------|---------|--|
| <i>Water supply, sewerage, waste management and remediation activities (section E of KVED-2010)</i> | How do you assess your current stocks of finished products | too large (above normal) | adequate (normal for the season) | too small (below normal) | no stocks of finished goods | balance | <i>change of balance over III quarter 2022, pp</i> |
| | | 0 | 31 | 2 | 67 | -2 | -2 |
| | How do you expect to change over October–December 2022: | increase | remain unchanged | decrease | no response | balance | <i>change of balance over III quarter 2022, pp</i> |
| | production | 8 | 67 | 25 | 0 | -17 | -8 |
| | selling prices for the products | 12 | 88 | 0 | 0 | 12 | -8 |
| | employment | 4 | 88 | 8 | 0 | -4 | 4 |
| | How do you expect to change export orders (export demand) over October–December 2022 | increase | remain unchanged | decrease | no export | balance | <i>change of balance over III quarter 2022, pp</i> |
| | | 0 | 2 | 0 | 98 | 0 | 0 |
| | How do you assess your current production capacity, considering your current order books and the expected change in demand over October–December 2022 | more than sufficient | sufficient | not sufficient | no response | balance | <i>change of balance over III quarter 2022, pp</i> |
| | | 8 | 81 | 11 | 0 | -3 | -3 |
| | How did change competitive position on the domestic market in July–September 2022 | improved | remained unchanged | deteriorated | no response | balance | <i>change of balance over III quarter 2022, pp</i> |
| | | 4 | 87 | 9 | 0 | -5 | -1 |
| | How did change competitive position on foreign markets in July–September 2022: | improved | remained unchanged | deteriorated | no export | balance | <i>change of balance over III quarter 2022, pp</i> |
| | inside the EU | 0 | 2 | 0 | 98 | 0 | 0 |
| | outside the EU | 0 | 2 | 0 | 98 | 0 | 0 |